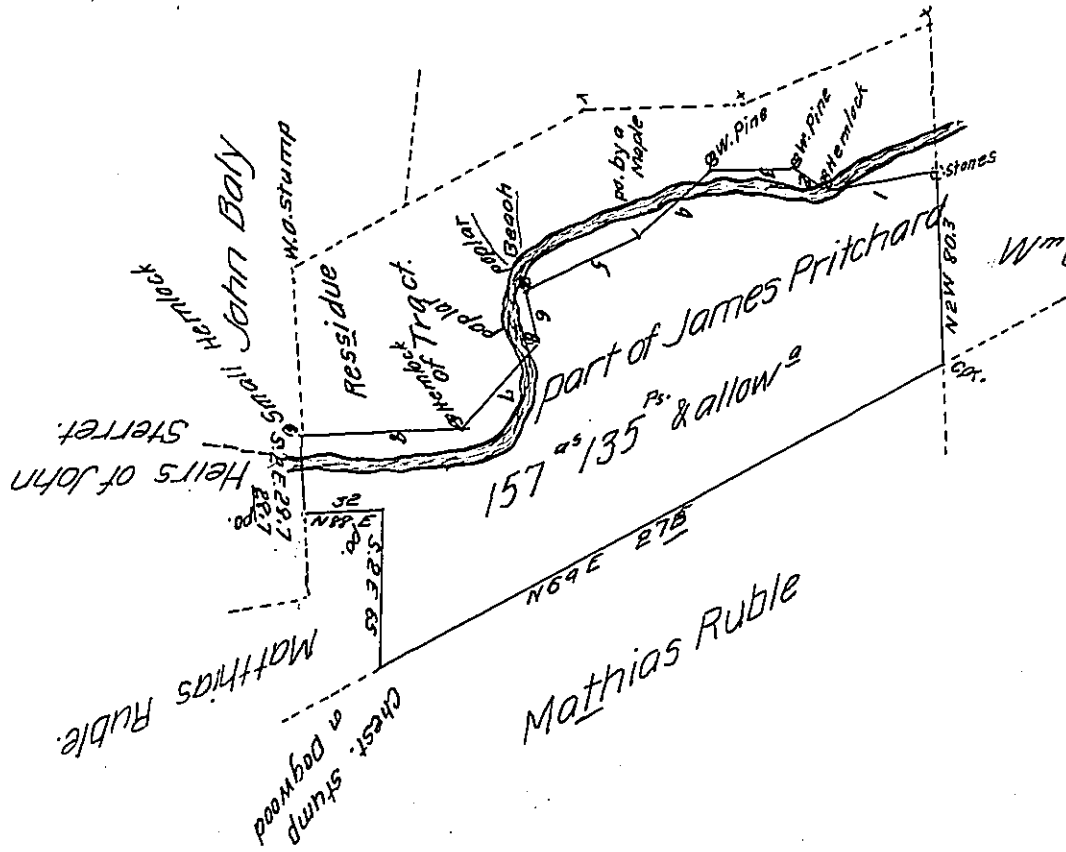


Courses & distances from
Stones Corner & division
line down the Creek.

- N^o 1 - S 80 W 30 Hemlock
- 2 - N 59 W 19 W. Pine
- 3 - S 88 W 35 W. Pine
- 4 - S 48 W 41 po. by Maple
- 5 - S 64 W 56 Beach
- 6 - S 16 E 22 poplar
- 7 - S 42 W 47 Hemlock
- West 773 small Hemlock.



W^m Orr & Jacob Ruble.

Draft of One hundred & fifty seven Acres & 135 perches & allowance of
six pr. C^t for Roads &c Situate in Armagh Township Mifflin County being
part of 268 acres & Allow^g which was Surveyed 29th Oct. 1767 in pursuance
of an order granted James Pritchard dated 25th Nov. 1766 No. 19.53 which
appears to have been Divided by John Brown & Resurveyed ^{began} on 18th April 1840
& finished 28th June 1840.

To Jacob S. Hade Esq^r

John Shaw D.S.

S. G. of Penn^a

IN TESTIMONY that the above is a copy of the original remaining on file in
the Department of Internal Affairs of Pennsylvania, made
conformably to an Act of Assembly approved the 16th day of
February 1833, I have hereunto set my hand and caused
the Seal of said Department to be affixed at Harrisburg,
this Twenty eighth day of February 1907

Isaac P. Brown
Secretary of Internal Affairs.